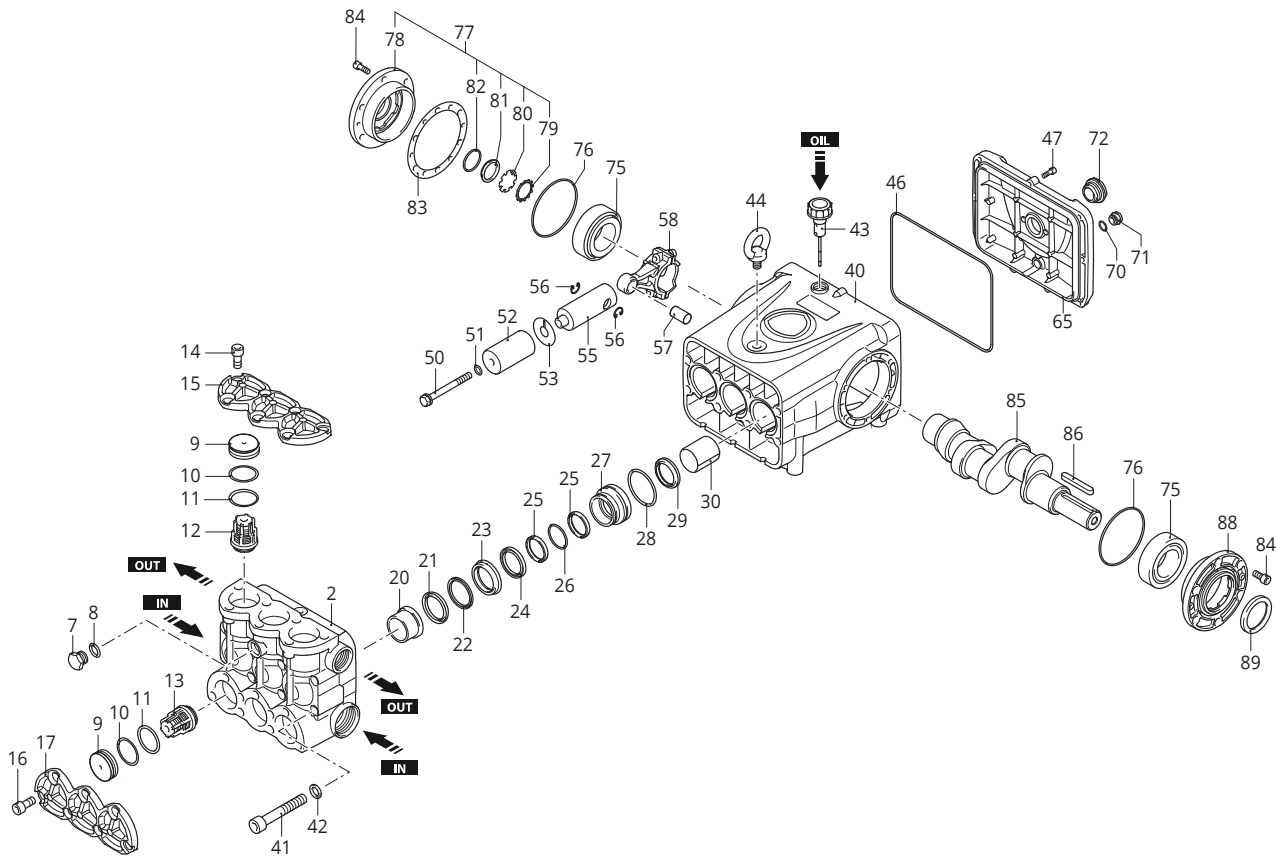


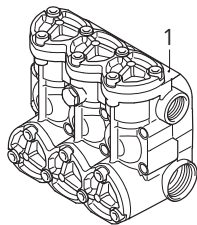
A.R. NORTH AMERICA

RTD 100.200N/ RTD 80.300N 1000 RPM



74 - 1

Complete Pump Head



74 - 2



RTD 100.200N/ RTD 80.300N 1000 RPM PARTS/KITS

Industrial Pumps

Pos	Code	Description	Qty	Note
1	4189206	Head Assembly Ø32	1	☐
	4189207	Head Assembly Ø32	1	■
2	4181020	Blank Head	1	☐
	4180020	Blank Head	1	■
7	880581	Plug 1/4" G Brass (132.76in/lbs)	1	■
	820361	Plug 1/2" G Brass (354.03 in/lbs)	1	☐
8	820510	O-Ring Ø10.82x1.78	1	■
	180101	O-Ring Ø17.5x2	1	☐
9	4181030	Plug	6	■
	4180510	Plug	6	☐
10	4181060	Ring Anti-Extrusion	6	■
	4180520	Ring Anti-Extrusion	6	☐
11	100410	O-Ring Ø34.6x2.62	6	■
	3680250	O-Ring Ø45.69x2.62	6	☐
12	3669051	Complete Valve Black Spring	3	■
	4189051	Complete Valve Black Spring	3	☐
13	3669050	Complete Valve Silver Spring	3	■
	4189050	Complete Valve Silver Spring	3	☐
14	4180880	Bolt TCEI M12x30 (752.31 in/lbs)	9	■
	4180670	Bolt TCEI M12x25	7	☐
15	4180840	Valve Cover	1	■
	4180190	Valve Cover	1	☐
16	4180880	Bolt TCEI M12x30	9	■
	4180880	Bolt TCEI M12x30 (752.31 in/lbs)	7	☐
17	4180840	Valve Cover	1	■
20	4181050	Support Ring Ø32	3	■
	4180450	Support Ring Ø32	3	☐
21	4180440	High Pressure Seal	3	
22	4180460	Ring Anti-Extrusion	3	
23	4180120	Front Piston Guide Ø32	3	
24	4180490	Low Pressure Seal	3	
25	4181040	Rear Piston Guide Ø32	3	■
	4180110	Rear Piston Guide Ø32	3	☐
26	1344070	O-Ring Ø60.05x1.78	3	
27	480671	Oil Seal	3	
28	4180500	Bushing	3	
29	4180740	Fiber Ring	6	☐
30	1150280	O-Ring Ø50.52x1.78	3	☐
40	4180010	Pump Body	1	
41	2820290	Head Bolt TCEI M12x110 (752.31 in/lbs)	8	
42	2820470	Washer	8	
43	3660350	Oil Cap (Vented Dipstick)	1	
44	2820330	Eyebolt (132.76)	1	
46	4180340	O-Ring Ø240x3	1	
47	780330	Bolt (88.51 in/lbs)	9	
50	4180170	Bolt (265.52 in/lbs)	3	
51	2840890	O-Ring Ø14x2	3	
52	4180160	Piston Ø32	3	
53	4180180	Washer (Slinger)	3	

Pos	Code	Description	Qty	Note
55	4180081	Piston Rod	3	
56	160691	Retainer Ring Øi 18	6	
57	4180090	Connecting Rod Pin	3	
58	4180820	Connecting Rod Bronze	3	
65	4180030	Rear Cover	1	
70	740290	O-Ring Ø14x1.78	1	
71	2282280	Plug w/Magnet (177.01 in/lbs)	1	
72	4180790	Oil Sight Glass (177.01 in/lbs)	1	
75	4180570	Bearing	2	
76	2640220	O-Ring Ø94.92x2.62	2	
77	4189000	Complete Side Cover	1	
78	4180050	Side Cover	1	
79	1941290	Retainer Ring	1	
80	1941260	Sight Glass Diffuser	1	
81	1941270	Oil Sight Glass	1	
82	100410	O-Ring Ø34.6x2.62	1	
	4180260	Shim 0.05mm	1	
	4180270	Shim 0.10mm	1	
	4180280	Shim 0.19mm	1	
	4180290	Shim 0.25mm	1	
84	180030	Bolt TCEI M8x20 (216.8 in/lbs)	12	
	4181010	Shaft 4 ID Stamp	1	■
85	4180060	Shaft 3 ID Stamp	1	☐
86	2820280	Key	1	
88	4180040	Side Cover	1	
89	4180300	Shaft Oil Seal	1	

AR645107 Oil (SAE30) (1.07 gal) - Capacity 110 oz, QTY 1
 Pumps are Prefilled with Oil from the Factory.
 Change oil every 3-5 months or every 500 hours of operation.
 Tightening torque (Tolerance + 0 ÷ -10%)

LEGEND			
Symbol	Material	Description	
☐	-	RTD100.200N	Ø 32
■	-	RTD80.300N	Ø 32

Valve Kit 43614 ☐ Kit 42835 ■	
Pos.	Qty
12	3
13	3

Piston Kit 43797	
Pos.	Qty
52	3

Water Seal Kit 43798 ☐	
Pos.	Qty
20	3
21	3
22	3
24	3
25	6
26	3
28	3

Water Seal Kit 46102 ■	
Pos.	Qty
20	3
21	3
22	3
24	3
26	3

Oil Seal Kit 43616	
Pos.	Qty
29	3
46	1
76	2
89	1

Piston Guide Kits 43799	
Pos.	Qty
23	3
27	3

COUNTRY OF ORIGIN: ITALY
LAST UPDATED: APRIL 2023